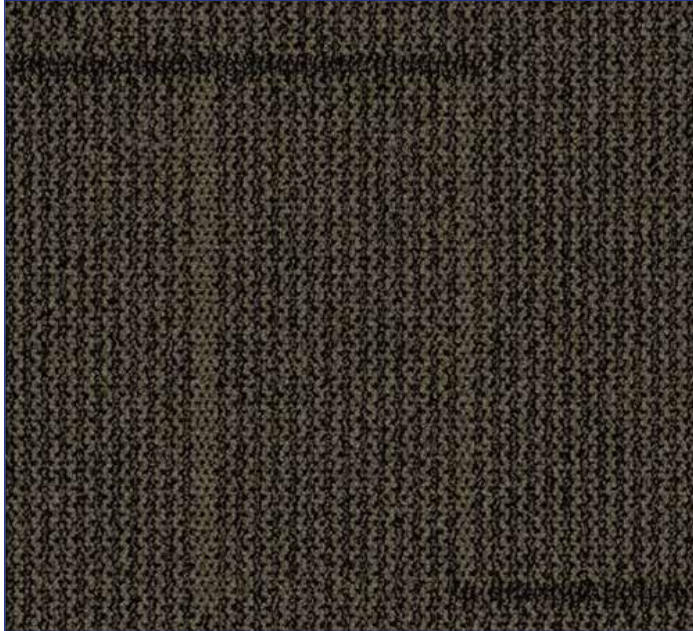


Always dissipative, never conductive.

Formulated for ANSI/ESD S20.20 electronics manufacturing and for use around powered equipment and in mission critical environments.

MINIMUMS APPLY

Non-Stock Colors (250 yard minimum. Contact Staticworx for additional colors.)



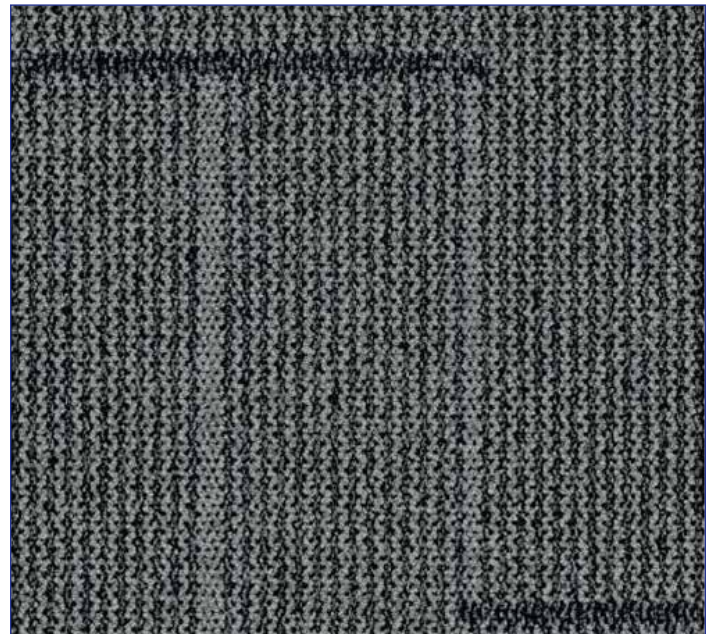
7495 Top Soil 24"



7496 Fescue 24"



7497 Flax 24"



6891 Volcanic Ash 24"

ShadowFX™ SDC Furrows II Carpet Tile

SPECIFICATIONS

Product construction: Tufted textured loop

Standard colorline: 2

Yarn system: Type 6,6 nylon

Yarn manufacturer: Universal

Dye method: 100% solution dye

Recycled content:

Post industrial range: 47% - 47%

Post consumer: 1%

Total recycled content: 48% - 48%

Soil/stain protection: Protekt²®

Antimicrobial:

(AATCC 138 washed) (AATCC 174 parts 2&3) Intersept®

Tufted yarn weight: 17 oz/yd²

Machine gauge: 1/12 in

Pile height: 0.19 in

Pile thickness: 0.106 in

Stitches: 8.33 /in

Pile density: 5774

Total thickness: 0.310 in

Size: 19.69 in x 19.69 in (24 in x 24 in available as a special order)

Radiant panel: (ASTM E - 648) Class 1

Smoke density: (ASTM E - 662) £450

Lightfastness: (AATCC 16 - E) ³ 4.0 @ 60 AFU's

Static: (AATCC - 134) < 0.4 kV

Dimensional stability: AACHEN Din 54318 <.10%

Conductive fiber: Staticworx Helix 44 denier conductive fiber

Groundable path: Copper ground strip

Grounding frequency: 1 per 1,000 sq. ft.

Backing systems: Permanent static-dissipative backing.

Adhesives: TacTile™ pads for glue-free installations, including over raised access floors. Use only Staticworx-approved conductive adhesives, such as GroundTack pressure sensitive adhesive.

Installation: Parquet i (quarter-turn); brick

kV rating: AATCC 134-1996 electrostatic propensity: less than 0.4 kV (400 volts). Tested at 12% relative humidity at 20°C and 70°F.

Body voltage generation (BVG) per ANSI/ESD S97.2: Less than 50 volts: Meets ANSI/ESD S20.20 requirements for use in EPAs in electronics manufacturing.

Electrical resistance:

ESD S7.1/NFPA 99 Resistance Characterization of Materials: Nine or more readings from surface to groundable point. Tested with an applied voltage of 100V. Measured in Ohms, $1.0 \times 10^6 - 1.0 \times 10^8$.

ESD S7.1/NFPA 99 Resistive Characterization of Materials: Nine or more readings between electrodes placed 1 foot apart. Tested with an applied voltage of 100V. Measured in Ohms, $1.0 \times 10^6 - 1.0 \times 10^8$. Meets Motorola R56 and ATIS-0600321 for use in telecommunications applications. Meets FAA STD 019e for use in flight control applications.

Electrical Resistance/Voltage Test ANSI/ESD S-20.20: Approved for use in EPAs in electronics manufacturing with approved footwear system. Results within recommended range < 35×10^6 Ohm or < 100 volts.

D.O.D. HDBK263A, Section 40.1.2: Meets recommended guidelines for sensitive ESD devices, Class 1.

Roller Caster Electrical Test (CET) proven. Product meets ANSI/ESD S20.20 after 125,000 cycles.

Meets the following standards:

- Motorola R56 : For use in 9-1-1 dispatch facilities
- FAA STD 019e: For flight control applications
- NFPA 99: For use in healthcare facilities
- ASTI-0600321.2010: For telecommunications rooms
- ANSI/ESD S20.20-2007: For electronics handling

Additional benefits:

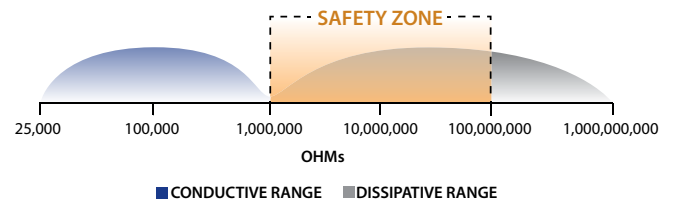
- Lifetime static control
- Ideal for glue-free installation over bare concrete and raised access floors.
- Installs with releasable adhesives for easy removal and relocation
- Green Label Plus – Certified (GLP0820)



Green Label Plus is a voluntary industry testing program for carpet products that establishes the highest standard for indoor air quality

(IAQ) ever set by the carpet industry. Tested by an independent, certified laboratory, carpets with this label meet stringent criteria for low chemical emissions.

Your "Sweet Spot" for Safe Dissipation



All Staticworx flooring is within the safe range shown here.