

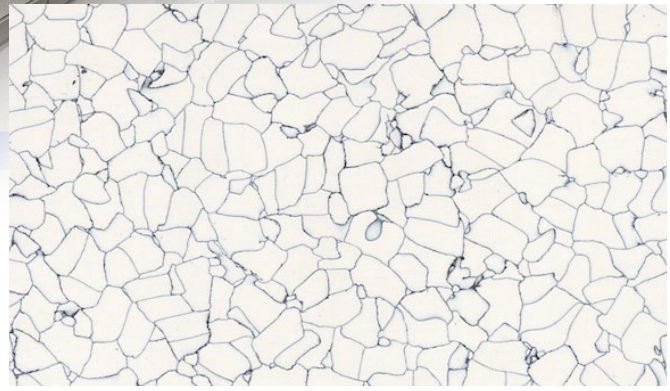
ENSURES GOOD INDOOR AIR QUALITY  
**CALIFORNIA 01350 CERTIFIED**  
 as a low-emitting material

**AmeriWorx**<sup>®</sup> Series  
**PRECISION MILLED VINYL TILE**

100% American Made Precision-Milled 

Meets ANSI/ESD S20.20

**AMERIWORX CLASSICS**



Spring Snow

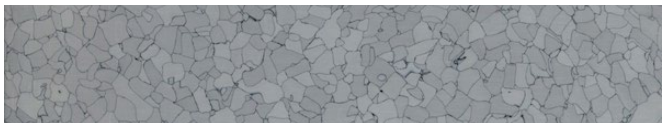


Adirondack Ridge

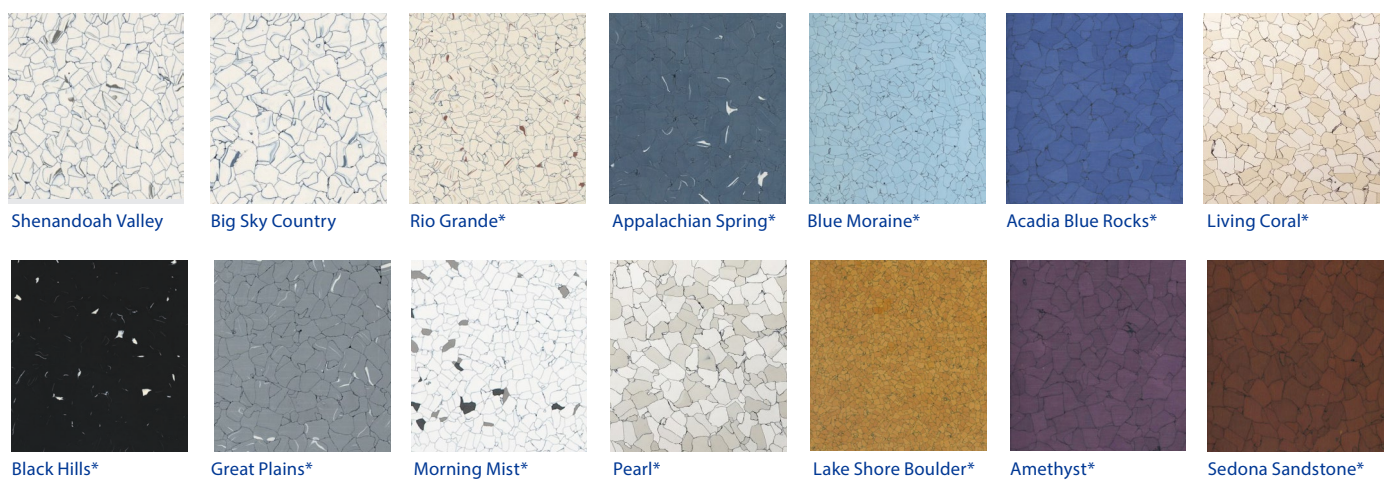
**AMERIWORX ROX**



Black Rock Canyon



Grey Dolomite



Shenandoah Valley

Big Sky Country

Rio Grande\*

Appalachian Spring\*

Blue Moraine\*

Acadia Blue Rocks\*

Living Coral\*

Black Hills\*

Great Plains\*

Morning Mist\*

Pearl\*

Lake Shore Boulder\*

Amethyst\*

Sedona Sandstone\*

\*non-stock, minimums apply  
 Conductive and Dissipative materials available.\*  
*Please note: Dissipative vinyl is a special order item.*  
 All AmeriWorx tiles can be installed with StaticWorx Pressure-sensitive Adhesive

**Conductive and dissipative materials available in all styles.**



\*Warranty requires that the tile system is installed using StaticWorx approved materials and procedures

flooring that keeps you grounded

# AMERIWORX VINYL TILE

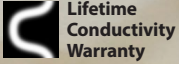
## BENEFITS

- **Gap-Free Installation:** Precision milled edges eliminate gaps in installation. High density resin eliminates tile shrinkage.
- **Color runs through entire thickness of the tile** so that deep scratches do not reveal a different color — helps hide scratches.
- **Never requires wax:** High density resin reduces maintenance, resists scuff marks and staining, and overall is easier to keep clean.
- **Ideal for extreme duty manufacturing applications.**
- **Meets requirements for Buy Federal American as well as RoHS directive.**

## INDOOR AIR QUALITY INFORMATION

California Department of Health CDPH/EHLB/Standard Method Version 1.1, 2010 (Emission testing method for CA Specification 01350)

- CALGreen, CA Code of Regulations Title 24, Part II, 2016, Sections 4.504.4/5.504.4.6: Resilient Flooring Systems
- ANSI/ASHRAE/USGBC/IES Standard 189.1-2017, Section 8.4.2.3: Floor Covering Materials
- USGBC LEED CI, NC, Schools, 2009, IEQ Credit 4.3: LEM - Flooring Systems
- USGBC LEED for Healthcare, 2009 (Feb 2011), IEQ Credit 4: LEM, Group 3 - Flooring
- Collaborative for High Performance Schools (CHPS) rating system, 2017 Criteria EQ2.2.3: Flooring Systems
- Green Guide for Healthcare, V2.2, 2007, EQ Credit 4.3: LEM - Flooring Systems



## SPECIFICATIONS

**Composition:** Precision milled vinyl tile of high density resin with a conductive carbon matrix. Pre-consumer recycled content > 10%.

**Electrical Performance:** Lifetime Warranty

**Free from defects in workmanship and materials:** Lifetime Warranty

**Sizes:** 12" x 12"  
(24" x 24", 36" x 36" available as custom sizes)

**Maintenance:** No wax

**Adhesive and Spread Rate:** Covers approx. 180 - 220 sq. ft/gal

**Gauge:** 3.0 mm

**Grounding Material (Supplied with order):** One 2" x 24" copper strip installed every 1,000 ft

**Trowel Sizes:** 1.6 x 1.6 mm (1/16" x 1/16") Square Notch with 1.6 mm (1/16") Flats



ESD Messaging Tiles Available



## INDUSTRY TESTS

Category	Test Method	Results
<b>Critical Radiant flux CRF (W/cm<sup>2</sup>)</b>	ASTM E-648	> 1.0 W/cm <sup>2</sup>
<b>Chemical Resistance</b>	ASTM F-925	Excellent (Acids, Alkalis, Household Chemicals)
<b>Electrical Resistance</b>	ASTM F-150	Point to Point & Point to Ground: 50,000 – 1,000,000 ohms Dissipative: 1,000,000 - < 1,000,000,000 ohms
<b>Electrostatic Propensity</b>	AATCC-134	<12 volts
<b>Fire Resistance (Steiner Tunnel)</b>	ASTM E-84	< 75 (Class 1)
<b>Electrically Conductive Floor Coverings</b>	ANSI/UL 779	Meets UL Standard
<b>Floor Materials – Resistive Characterization of Materials</b>	ANSI/ESD.S7.1-2013 Conductive: <1.0 x 10 <sup>6</sup> Dissipative: ≥ 1.0 x 10 <sup>6</sup> and < 1.0 x 10 <sup>9</sup>	Surpasses recommended standards of ANSI/ESD S20.20-2014
<b>Floor Materials and Footwear-Resistance Measurement in Combination with a Person</b>	ANSI/ESD STM97.1-2015 < 3.5 X 10 <sup>7</sup>	Surpasses recommended standards of ANSI/ESD S20.20-2014
<b>Floor Materials and Footwear- Voltage Measurement in Combination with a Person</b>	ANSI/ESD STM97.2-2016 <25 volts with conductive footwear	Surpasses recommended standards of ANSI/ESD S20.20-2014
<b>Life Safety Code</b>	NFPA 101	Passes
<b>Smoke Density</b>	ASTM E-662	≤ 450
<b>Solid Vinyl Floor Covering Materials</b>	ASTM F-1700	Conforms
<b>Standard for Health Care Facilities</b>	NFPA 99	Passes
<b>Static Decay, Method 4046 at 15% RH</b>	ASTM F-101C	5000 – 0 Volts in <0.01 sec.
<b>Static Load</b>	ASTM F-970	< 0.001" RI @ 250 psi (1.125" diameter foot) 0.005" RI @ 2,500 psi (0.5" diameter foot)