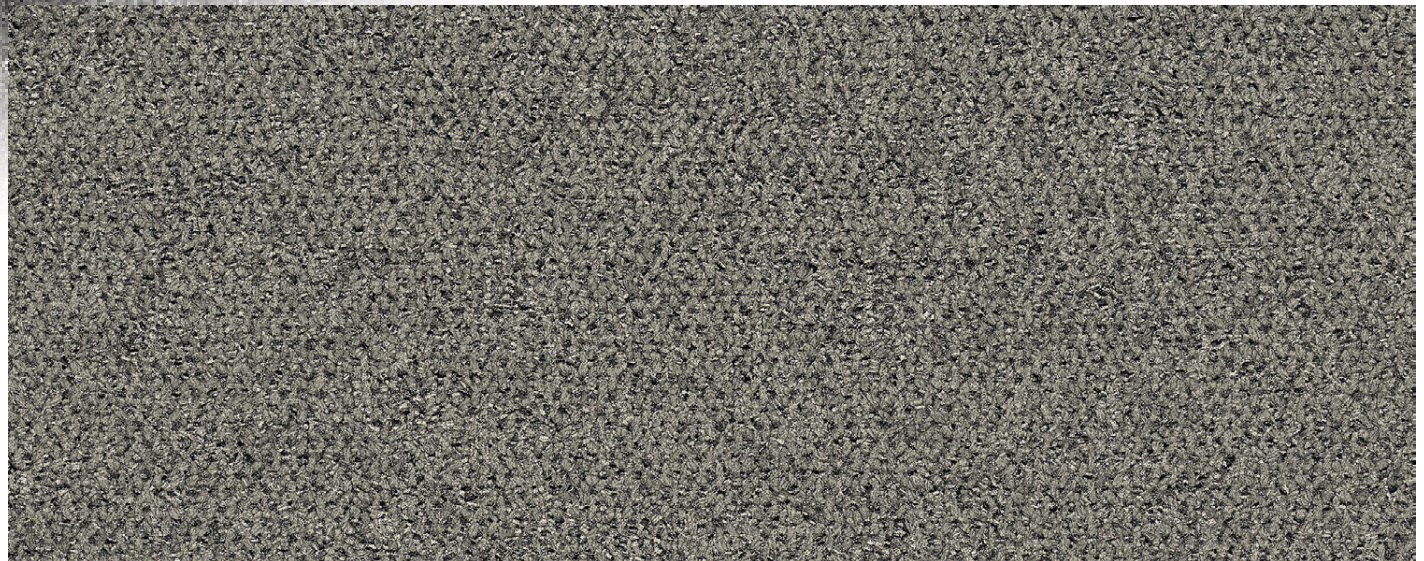


SHADOWFX™ SDC

VERMONT SLATE COLLECTION

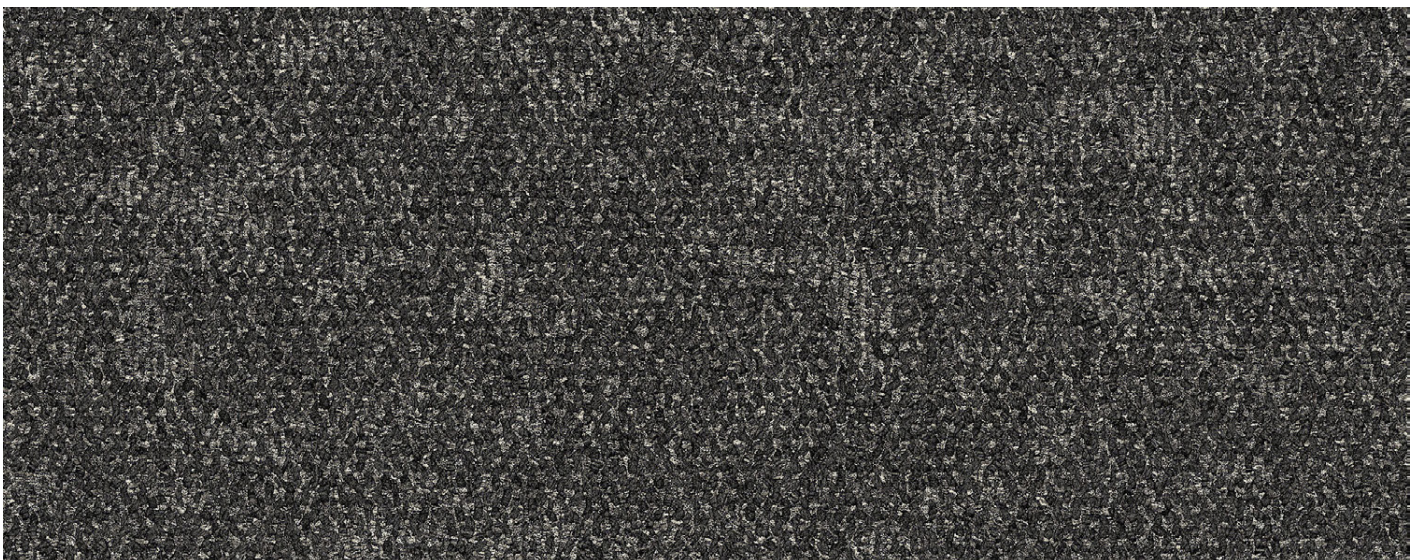
Meets ANSI/ESD S20.20-2014, EN61340-5-1, ATIS 0600321.2015, FAA 019f, Motorola R56, MIL-STD-1686 — for any static control flooring application.

SHADOWFX SDC — CONSTRUCTED OF PREMIUM BRANDED YARN FOR DEMANDING ESD APPLICATIONS AND 24/7 ENVIRONMENTS.



3-50 Vermont Gray Slate

19.69" 24"



3-51 Hoosic Riverbed

19.69" 24"

ShadowFX ESD carpet tile is made by an industry leader in the development of flooring made using recycled materials and 100% Carbon Neutral for the total life cycle.



3-52 Vermont Black Bear



3-53 Red Pine Bark



3-54 Cedar Wood



3-55 Northern Hardwoods



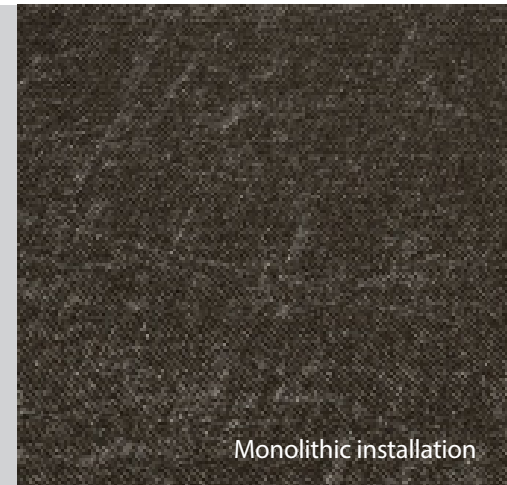
3-56 Black Maple

Choose your tile pattern and enjoy worry-free tile replacement

The rock-like etchings in our Vermont Slate carpet tiles flow seamlessly across the surface of the floor in a non-directional or monolithic installation. And the mergeable design allows you to replace tiles without worrying about dye lots or affecting the overall appearance of the floor.

“Your product rocks and I’m so glad we were able to find an attractive solution that didn’t leave us with some run-of-the-mill ugly disaster in the middle of our workspaces. You would never know it was ESD, WHICH IS AMAZING!”

Sydney Young, Associate IIDA, Interior Designer, FFKR Architects



Monolithic installation



3-57 Otter Creekbed



3-58 White Riverbed



3-59 Champlain Shoreline



3-60 Caspian Shoreline



3-61 Willoughby Shoreline

SHADOWFX™ SDC VERMONT SLATE

Simplicity in a Complex World

Staticworx Vermont Slate carpet-tile collection combines the high performance and durability you expect from Staticworx floors in a design that transports you to the rocky hills of Vermont. Warm, monochromatic earth tones create a more peaceful environment, bringing simplicity to a complex world, inspiring creativity, and encouraging a sense of wellbeing and connectedness.

Passing the Test

Mergeable design - eliminates worry about matching dye lots

No fade - solution-dyed yarn prevents fading

Monolithic design - easy to install and replace

Durable - rated for high traffic

Superior static control - meets the most stringent ESD standards*

Static dissipative - meets standards for telecom and government spaces*

Recycled content - Total 59%, Pre-consumer 57%, Post-consumer 2%



ShadowFX Floating Floors

INSTALL OVER ANY EXISTING HARD SURFACE - AN IDEAL OPTION FOR OCCUPIED WORKSPACES

Create a floating floor by positioning Shadow FX carpet tiles over GroundBridge™; then join tile corners with TacTiles®.

- No VOCs — no need to shuffle employees to different work areas or endure downtime and disruptions.
- No need to remove furniture. Just lift desk and consoles and place tiles in designated spaces.
- No glue, no mess — easy, fast, clean installations & tile replacement.



Floating ShadowFX carpet tile installed over access flooring

SPECIFICATIONS

Construction: Tufted textured loop

Yarn weight: 17 oz./yd² (576 g/m²)

Total Thickness: .236 inch

Fiber Modification Ratio: 1.7 to 1.9

Sizes: 19.69" x 19.69", available in 24" x 24", PosiTile-compatible with Tate Access Floors

MEETS THE FOLLOWING STANDARDS:

ANSI/ESD S20.20, for electronics manufacturing and handling

Motorola R56, for 9-1-1 dispatch facilities

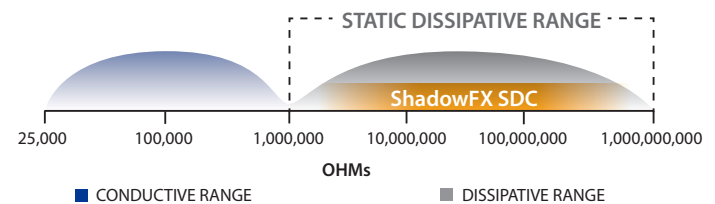
ATIS-0600321.2015, for telecom applications

FAA 019f, for flight control applications

NFPA 99, for use in healthcare facilities

Army Corps of Engineers UFGS 09 62 38, for static-control in government facilities

Static Dissipative for ESD Safety



Monolithic



Non-Directional

Installation
Method



ESD Messaging
Tiles Available



Visit Webpage

